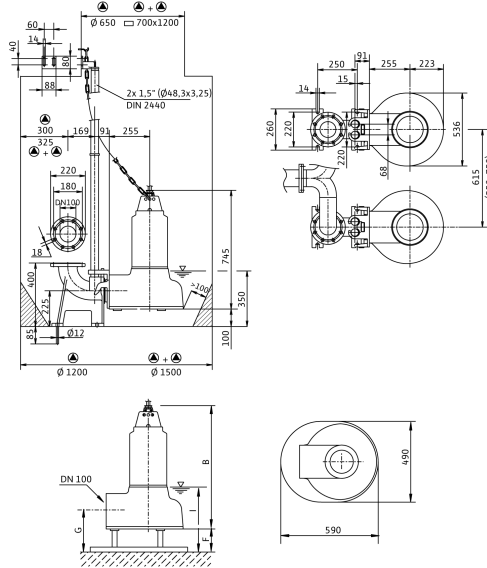
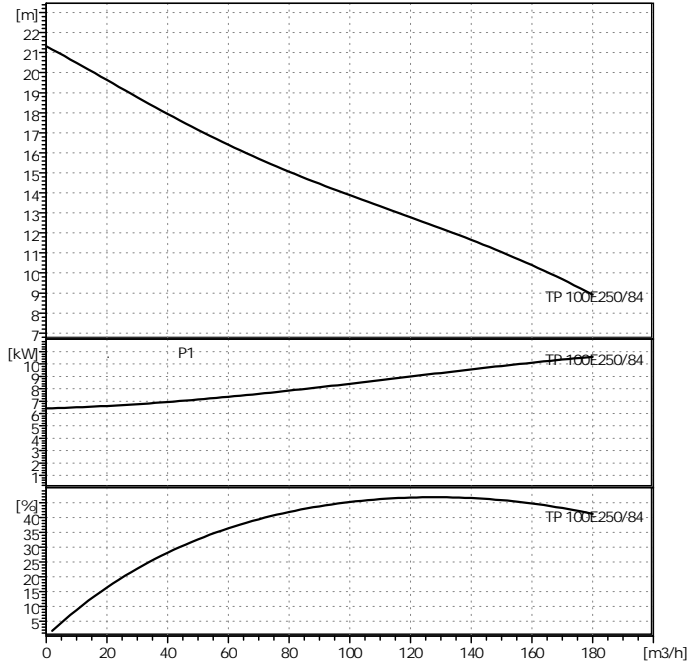


TP 100 E 250/84



30/06/15

1 / 1



3 ~ 400 V, 50 Hz

P2 ≥ 3,5 kW

Klemme	U1	V1	W1	V2	W2	U2	W	SK	10SK	PE	DI	PE
Ader-Nr.	1	2	3	4	5	6	7	8	9	0		

0	m ³ /h
0	m
20	°C
0.9983	kg/dm ³
1.005	mm ² /s
0.02337	bar

WILO	
TP 100 E 250/84	
PN 10	
0	°C
Max. 40	°C

()	m ³ /h
0	m
250	1/min
	mm

/

1.0570/1.4404 (AISI 316L)
SiC-SiC
C-Cr
1.4404 (AISI 316L)

mm

DN 100 / PN 0	
DN 100 / PN 0	
60	kg
95	mm

2	8.4	kW
	1450	1/min
	3~400 V, 50 Hz	
	18.8	A
	IP 68	
	+/- 10%	

2003563